

# Annual Report

West Linn Lutheran Church

20  
24





# A MESSAGE FROM PRESIDING BISHOP ELIZABETH EATON



Dear friends in Christ,

All around us, we see signs of God’s love and goodness. A person who has stepped away from church for many years steps back into a congregation, feeling the call of the Holy Spirit. Young adults feeling isolated in a digital-first world start gathering in person in a small group, enjoying the warmth of a hug and a new friend asking about their week. A mother plants a garden, and it yields fruits and vegetables, giving her nutritious food for her kids and extra produce to sell at the local market. Everywhere we look, we see signs of Christ’s love. In Psalm 93, we read: “More majestic than the thunders of mighty waters, more majestic than the waves of the sea, majestic on high is the Lord! Your decrees are very sure; holiness befits your house, O Lord, forevermore” (4-5).

God’s love is a majestic thing, and it moves us to share it in word and deed. The ministries of our congregations, our synods and the ELCA churchwide organization are all working together to share God’s love with people in our neighborhoods, across our country and around the world.

I am so grateful for you, dear church. Your generosity to each of these three expressions of the church — your congregation, your synod and the churchwide organization — has bolstered the church’s ability to share the message of God’s love to people who are longing for it. Through your

---

## “More majestic than the thunders

of mighty waters, more majestic  
than the waves of the sea,  
majestic on high is the Lord!  
Your decrees are very sure;  
holiness befits your house, O  
Lord, forevermore.”

—Psalm 93:4-5

---

financial resources, your time volunteering and accompanying others, and your voices, you’ve helped carry this message of God’s majestic love. Thank you, dear church. As we look ahead to the coming year, I encourage you to stand steadfast in God’s promises, sure of God’s love and goodness.

A handwritten signature in black ink that reads "Elizabeth A. Eaton". The signature is written in a cursive, flowing style.

The Rev. Elizabeth A. Eaton  
Presiding Bishop  
Evangelical Lutheran Church in America



Oregon Synod



January 1st, 2025

Dear Beloved of the Oregon Synod,

Blessings as you gather in the name of the Incarnate One! My prayers are with you as you seek to continue to walk the Way of Jesus in these compelling and complex times. As you prepare for all the discernment and decisions ahead in your 2025 congregational meeting, God bless you and hold you. With courage and delight, may we be for others the Body of Christ and living reminders that we are never alone, but live always awash in God's grace.

Please save the date and prepare for our upcoming Synod Assembly which will be held May 30th-June 1st, in person, at the Holiday Inn on the Columbia Riverfront in Portland, Oregon.

You might have noticed that our themes the last few years have focused on friendship. The theme for this year is "Anam Cara: Soul Friends in the Spirit of Jesus." Anam Cara is a Gaelic phrase that describes a sacred relationship that encourages spiritual growth. At the 2025 assembly we will explore and seek to strengthen our friendships with one another, the Earth, and all of our neighbors, churched and unchurched.

What a time to abide in God's sacred friendship/"koinonia"! Our theme verse for the year speaks to Anam Cara from John 15:13; *Greater love has no one than this: to lay down one's life for one's friend.*

As in years past, there are a couple of things to consider as you prepare for Synod Assembly 2024:

1) **Voting members.** Please elect your voting members to attend the event and ensure your budget provides funds to send these members to the assembly.

2) **Additional voting members.** If possible, we encourage you to elect “additional voting members” as described in the constitution and rules of the assembly (both which you can find on our website). Additional members can be constituted of: up to 2 people who identify LGBTQIA+, up to 2 people for whom English is not their first language AND up to 2 Youth/Young Adult voting members).

With your continuing prayers, financial support and deepening relationships, our synod is becoming a shimmering fabric of relationship, capable of befriending one another, our planet, ourselves, our history, our theological tradition and our diverse neighbors with kindness and grace. In so doing, we can become more than we dare dream or imagine, transformed by the renewing of our lives and minds.

I look forward to sharing in this work with you throughout this new year. Let us dare to love one another and walk the Way of Christ’s courageous love together, as ongoing and sacred encounter.

Yours in hope,

A handwritten signature in cursive script that reads "Laurie L. Caesar". The signature is written in black ink and is positioned below the text "Yours in hope,".

Bishop Laurie Larson Caesar

Oregon Synod, ELCA





*“Love is patient, love is kind.  
Love rejoices with the truth.  
It always protects, always trusts, always hopes,  
always perseveres.  
Love never fails”  
~1 Corinthians 13: 4-8~*

*“Love is the most durable power in the world.  
This creative force, so beautifully exemplified in  
the life of our Christ,  
is the most potent instrument available in  
mankind’s quest for peace and security”  
~Rev. Dr. Martin Luther King Jr.~*

# Pastor's Letter

---

Dear Faithful Friends and Family in Christ,

I get to write one of these this year, a full reflection and report on this very full year!!! This time last year, I had just started the Sunday before the annual meeting and I really couldn't say I had begun to get my feet damp in the ministry yet, let alone getting them wet. What a wonderful opportunity to reflect back on what this year has held for us all together, including but not limited to:

\* Welcoming new members of our WLLC family of faith. Welcomed and hired Jordan, Katrina, and (soon) Ian onto our staff. \* We painted doors, cleaned carpets, donated to and fed folks in and outside the walls of the church buildings! \* We celebrated: life and new life with our God, our 60+<sup>1</sup> anniversary of our congregation, and strengthening & forming new connections with interfaith, ecumenical, and building partners. \* We learned together, lightened spirits together and we loved each other- together. We saw God's love in these and so many more ways. \*

As our souls and faith tell us, God is love. The classic wedding scripture quoted above from 1st Corinthians need not be pigeonholed into wedding days. "Love is kind" is definitively for the full spectrum of the hurt and joy of today. Take hope and durability from that love in the unknown of tomorrow. It will stand with us as the mystery of the future washes over us, with all the saints of the past standing right behind us and Our Savior standing with us by our side. May God- Creator, Savior, and Sustainer, multiply and fortify our love today and all days, especially through this coming year. And personally, thank you for all the love you have shown to me and my family, it means the world to us!

Faithfully yours in God's grace and love,

A handwritten signature in black ink that reads "John Barton". The signature is written in a cursive, flowing style.

Pastor John Barton

# Council Letter

---

Looking back at the last year gives me great joy and hope!

We welcomed Pastor John and his family to our community/family at WLLC just over a year ago with his first Sunday on February 4th, 2024. They have fit right into the family that I call WLLC. In his short time with us so far, he has helped strengthen relationships with neighboring congregations and has welcomed new relationships with others in an ecumenical fashion. He brings experience beyond his years and a great knowledge base. He has guided us through transitions and has come to understand who we are as WLLC.

Our congregation will be increasing our ministries outside of the walls of WLLC with the upcoming ordination of Jack Mandeville, our deacon in training. As a deacon, he will be and is already working on ways to improve service to our community and improve social and environmental justice within the community at large. He will be requesting that we step out of our comfort zone and assist in this mission. This work is very much in alignment with our Mission statement to “accept all.” I find this to go hand in hand with the verse I use, though not perfectly, as my lens when approaching a new situation, challenge or relationship:

*“Love the Lord your God with all of your heart and with all of your soul and with all of your mind and with all of your strength.’ The second is this: ‘Love your neighbor as yourself.’ There is no commandment greater than these.” Mark 12: 30-31*

As no church or person is perfect, I believe WLLC is doing a great job living into this mission which gives me great joy!

When looking back at 2024 we suffered many losses and difficult diagnoses of Jesus’ saints within our church. I have seen time and again how our community aids and supports each other with unending love through these times.

It was a year of transitions in staff this year. We said “goodbye” to Debbie, our former bookkeeper and to Kurt, our former A/V director as well as to Joshua, our former accompanist as they entered new chapters in their lives. We are grateful for their service and the gifts they brought to our community.

We have also welcomed new staff. We welcomed our new office administrator, Jordan, who has taken the wheel and brings a wonderful skillset and energy to the position. We then welcomed our new bookkeeper, Katrina, who brings expertise and efficiency to her position.

I am honored to have served as your Council president for the last two years. I want to thank all the staff, volunteers, council members and congregation members for being partners in the life of WLLC. Together we make a difference in the community of West Linn and beyond. I am filled with hope for the future of WLLC as I think of all the different ministries that make up the community of WLLC which you will read about in this annual report. Feel free to reach out to any of these groups if there is an area that you feel called to.

Peace to all,

*Jeff Young, Council President*



# Comms/Care/Operations

I think I said this a few years ago but it bears repeating, the only constant is change. This has been true of 2024 for me as we have welcomed a new Pastor and a new Office Manager. During this time, I have been supporting our new staff as they get connected to WLLC. Meanwhile all of the regular business of newsletters, answering phones, emails and creating new and better ways to communicate were also happening. We tried out new ways to navigate our Sunday Servants connections but ultimately moved towards a Team Captains model which has mostly been successful. I am thankful for the leadership of so many in the congregation for taking this on!

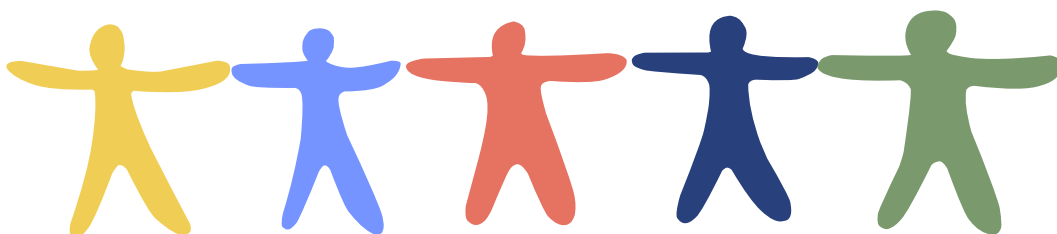
This year also saw the creation of a Care Team that meets monthly to review those in our congregation and community that need support. We recently commissioned them as the “Good Samaritans! This has truly increased our capacity to make connections and care for those in time of need. This has been done in a variety of ways, including visits, phone calls, emails, cards and sharing communion. Should you have any interest in joining our group, please reach out to me for more information. In addition to all these wonderful ministries, we also have our hospitality team that reached out to newcomers of the church with a friendly visit that had information about WLLC and cookies! Many thanks to our hospitality team for doing this important work!

On the operations side of things, I continued to work with the Church Council to ensure our building is operational. Our building is older and needs constant care and attention. If you are interested in being involved in this team, you can also reach out to me for more details.

Probably the most important shift in 2024 was bringing on Jordan Barton as the new Office Manager this fall. We are so thankful for Jordan’s ability and willingness to learn on the go! If you have not had a chance to meet Jordan, please stop by the church office to do so!

In the Fall of 2024 I began my Clinical Pastoral Education which had me working in more intentional ways with those who were hospitalized, those at home or in need of any other care. This also resulted in a job change for me moving from Communications to Lay Pastoral Care Coordinator. I am so thankful for all the many ways I have had the opportunity to serve at WLLC these past 7.5 years and I look forward to my ordination as Deacon in Fall of 2025!

*Jack Mandeville*



# Communications

As your new Communications and Office Administration Lead, I've had big shoes to fill since Jack passed me the baton. I've tremendously enjoyed getting to know all the people that make up the heart of WLLC, and I'm grateful for all the help and patience you've given me as I adjust to this new position.

Since starting in September, I've hit the ground running with projects in every direction. I began with a redesign of the WLLC logo (seen below) so that we could better represent the unique attributes that make our community so vibrant. I plan on incorporating this branding redesign even further into the WLLC sphere throughout 2025.

I've spent a lot of time writing and creating informational materials such as the WLLC Weekly Newsletter. Since starting last Fall, our subscribership has increased by 8% and the click rates have increased by nearly 15%. The newsletter changes weekly, so it's been a labor of love to try and make it even better with each passing week. The numerous ideas, suggestions, and contributions I've received from our community have been a huge part of its success.

In addition to the newsletter, I've been busy creating promotional materials for the myriad events that take place at WLLC. From our hugely successful Women's Advent Breakfast to our newly introduced Dinner Church, I've enjoyed flexing my graphic design background and giving our events a colorful look and feel.

Of course, I've also been riding the learning curve of everything that comes with the administrative side of my role. From correspondence and mail to learning how to create the presentations for our Sunday Services in ProPresenter, it's been quite a full five months.

A huge thanks to each and every person that has given me such a warm welcome. Here's to 2025!

*Jordan Barton*



# Choir

---

It has been a big blessing to Direct WLLC Choir this Year!

Choir and I worked hard, with a lot of passion and enthusiasm to enrich our Church services.

The highlights of the Year was Christmas Cantata and its preparation for the special service to say goodbye to our Dear Piano accompanist Joshua.

Choir was able to participate as well at the Christmas Concert at Schnitzer Concert Hall.

The Choir was able to create both wonderful services these Year - Easter and Christmas that will never be forgotten.

Both of these services went very well and the congregation received Choir pieces with joy.

I brought to the Choir couple of very challenging classical pieces this Year. Choir was working very hard in details on each note and phrase of these pieces. It turned out so well and I believe that the Choir really enjoyed every moment of this process.

I feel that the Choir following my directions with mutual respect and understanding. Everyone became even closer to each other in this difficult time.

I am with the Choir looking forward to create a wonderful musicianship with new accompanist and make the transition as smooth as possible.

Choir is doing its best and we feel that both Church Team and the Congregation are enjoying the Choir presentation and enrichment to the services.

*Helen Pevzner*



## FAMILY MINISTRY GRADES 6 THROUGH 12...BIG CHANGES

I am pleased to report on our combined middle school program for the youth at West Linn Lutheran and Prince of Life. This year POL continued their search for a pastor while Pastor Barton started here at WLLC. Meanwhile, we continued a traditional confirmation learning environment. Neither church had activities for their high school members.

Highlights this year include four young men choosing to be confirmed into their faith and into full participation in their respective faith communities. This occurred despite the growing pressure on students to confront problematic Christian teachings shared by other youth.

We also enriched our interfaith studies through a new relationship with Congregation Neveh Shalom. In April, youth from both groups did a service project for a foster-youth support organization. Since it was located at Lloyd Center, we followed up with a social ice-skating event.

In December we hosted a Hanukkah Meal and Learn event here at WLLC. It was a well-attended multigenerational event. The evening ended with our little ones learning how to play a dreidel game with the son of our guest speaker.

While it has been a blessing to serve in this ministry for the past 3 years, I will not be continuing past this May. I am currently spearheading our transition into a more contemporary approach to youth programming, and I am looking for others to join in and assist with the transition.

Looking ahead, I am issuing a wakeup call especially to those who remember the good old days when we could afford a youth director, and the traditional pastor-led classroom style of education for middle school.

Those days are long gone, while today's parents and youth are facing much tougher discrimination and challenges to their beliefs. Competition with scouting, sports, music, theater and all the excellent programs our parents choose for their children needs to be replaced with acceptance and cooperation.

Our response, together with other congregations who share our values, is into a more mentor/mentee approach while using scarce budget dollars to develop events and retreats that are meaningful. Prayerfully consider how you can be a part of this new reformation. Serve on a planning group that identifies possible retreats, service projects, and events that are relevant to youth ministry? Be a mentor for a middle schooler as he/she/they approach confirmation? Organize a fundraiser to underwrite a retreat? Say "yes" when asked to volunteer for a special event? Make a faith statement video that could be part of a self-study curricula? Help write the bimonthly youth newsletter?

Christ needs us ALL to be involved in passing along our faith to the next generation. Let Pastor John or the Council know how you are willing to assist.

Respectfully submitted,

*Carole White*

January 12, 2025

Created by West Linn Lutheran Church

# Pathways

## to Spiritual Growth

### The Reformation of Confirmation Class!

---

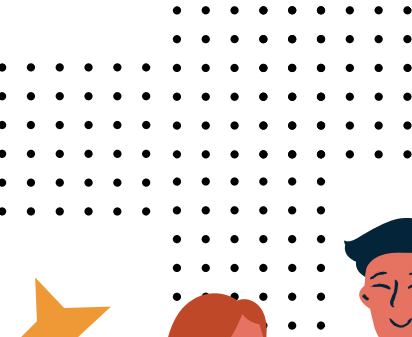
PATHWAYS TO SPIRITUAL  
GROWTH: GUIDING  
YOUTH TOWARD A  
LIFELONG JOURNEY OF  
FAITH, GROWTH, AND  
GRACE.

---

OPPORTUNITIES FOR  
COMMUNITY OUTREACH,  
MENTORSHIP, AND  
CREATIVITY

---

FOR ALL  
AGES!





# A/V and Tech

---

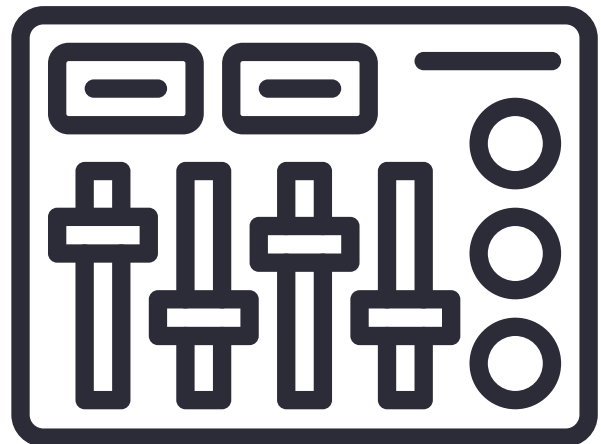
The AV Ministries Team's mission is to bring worship to those who cannot come to worship in person. Each service has a team of three operators: The video director controls our three cameras, selecting from camera to camera to get the best angle; The Soundboard operator mixes the sound for listeners in the sanctuary as well as for the people watching the live-stream from home; The Graphics Operator makes sure the proper slides are being projected for song lyrics, liturgical elements, and for scripture readings. All the streamed services are archived on our YouTube channel, so any service can be watched at any time. For those who want to revisit the sermon, we provide a Sermon-Only video for each Sunday.

In addition to our regular support for Sunday services, we also provide AV support for memorial services, special seasonal services, and other special events. In addition to our normal processes, we have procedures in place to provide a worship service on an inclement weather day when no one can make it into the church... provided the worship leaders have power in their respective homes, of course.

I want to publicly thank our current volunteers, without whom none of this would be possible:  
Anthony Calcagno, Dianne Eller, Jon Gudman, Gabe Lenihan, Greg Lenihan, Tom Lenihan,  
Nick Maggi, and Jeff Young.

If you would like to become part of our team, or simply have any questions about what we do,  
please reach out to any one of us!

Yours in Christ,  
*Gary Eppelsheimer*  
Captain, Audio Visual Ministries Team





# Altar Guild

---

In 2024, the dedicated Altar Guild Team, continued to be your secret Sunday (and Saturday) servants. A couple of us retired after years of dedicated service. We also added new members who have stepped in seamlessly.

When we lost our communion wine supplier early this year, we searched for an option that worked for MOST people. (Thank you all for your patience!). We are happy to report this change has made purchasing wine & grape juice easier AND less expensive. We buy it all locally without shipping costs.

Also this year, the hot water heater in the sacristy leaked and damaged the flooring. At the same time, the kitchen sanitizer (where we clean all the communion cups) malfunctioned. During these weeks, the Altar Guild team did not complain. What a crew!

Thanks to Terry Bottemiller for his hard work to repair and replace the flooring. Thanks to Jim Dumestre for fixing the kitchen sanitizer. We could still use a hot water heater in the sacristy. But no one complaints!

This team continues to work behind the scenes, setting up the altar for communion, then cleaning up after each service. Every 2-3 months, we meet for coffee, tea, fellowship. Although we continuously update each other informally with changes, suggestions, and questions, this fellowship is also a great time to quickly address any issues or concerns... and laugh, share, cry, love.

We rotate assigned groups (of 2 or 3) every 2 weeks, meaning everyone “works” 2 weeks, then is off for about 2 months. We’d love to expand our team! Please consider joining us. Detailed training is available!

Contact Gretchen Dumestre (JGDumestre@msn.com, 503-504-6921) or the church office if you are interested.

*Gretchen Dumestre*



# Family Ministry

---

January of 2024 began with a good snow, and great excitement and anticipation of the Barton family joining our church family. When we first met Pastor John, we discovered he too likes hot cocoa, and we had a big conversation about all of the things to put on the top. So for his first week here in February, we enjoyed a hot cocoa bar at coffee hour in his honor. We continued that month with making valentines to share, some of which said, "The Stardust in me Loves the Stardust in You". This has certainly been a year of getting to know one another and the building of relationships.

The spring brought an early Easter, and the highlight was our exciting annual Easter Egg Hunt, coordinated by Gayle Aten. This year we had around 25 children hunting eggs throughout the basement of the building, with a special room for the toddlers to discover at a slower pace. Thank you to all who donated a variety of surprises! And the spring had extra sparkle with Jan Sickert and Dede Carr sharing a puppet show! The school year wound up with a pancake breakfast party of 13 children playing games and enjoying goodies.

There were two fellowship opportunities in the summer that were well attended. The first was a pizza/snow-cone/movie night where we beat the heat and watched "Encanto". The second gathering was a fun barbecue party at Tanner Creek Park, coordinated by Michelle Calcagno. We are grateful that Thrivent supplemented the cost of this gathering.

The Sunday school teachers all delight in the fact that each of the WLLC children possess the gift of thoughtful verbal expression. In the coming Fall, we introduced a third class, which is taught by Dede Carr. This allows the preschoolers and younger elementary children to have more opportunities for Bible story conversation. We all continue to gather for music, then separate for story-time/crafts, and often meet back together for active games. There are 10 active families in the program.

In October, Harmony Preschool & WLLC held a Saturday "Trunk-or-Treat" with at least 15 cars involved. A new game area was developed by Lucile Martin and Callie Gromley. Many hands collaborated in promoting and offering spooky festivities for the whole neighborhood!

During the holiday season, we are thankful that we continue to learn from Pastor John about God's great wonders of Love. These discovery moments touch the hearts of the young child within all of us. We also had the special opportunity for the children to sing in the Christmas Cantata with Joshua Sommerville, which will always be remembered. And finally, the year was closed out on Christmas Eve, with playing "The Little Drummer Boy", being trained and led by our drummer, David Webster. Thank you David, for teaching us how to share our gifts with others.

The "Stardust" of God's Love continues to shine on in 2025...

Respectfully Submitted,

*Gail O'Donel*



# Family Ministry

---



# Women's Ministry

---

**Purpose Statement-** *to engage in the joy of connection, build relationships, explore new theological thought processes, and pray for others and each other.*

**Ministry outreach includes:** Women's Bible Study, Fall 2024 Women's Retreat, and annual Women's Advent Breakfast.

**Women's Bible Study-** meets twice monthly on a regular calendar year schedule.

Past year highlights:

\*Studying the impactful devotional writings of theologian Kate Bowler in her book, *Good Enough-40ish Devotionals for a Life of Imperfection*

\*Holding up in prayer loved ones, friends and the world

\*Summer salad luncheons intended as touch points for support and friendship

\*Hosted Lent Soup Supper and Advent Dinner Church

\*Off site gathering in gardens of Rose Ada and Chuck Coombs, Oregon City

\*Participation averages 15-18 per study gathering

Special thank you to Jan Sickert who masterfully and lovingly facilitates monthly devotional studies.

## **Fall 2024 Women's Retreat- "To Belong is to Connect...Celebrating Wonder & Joy in the Weaving of Belonging & Connection"**

After a lengthy hiatus, WLLC women

and friends gathered for a one day retreat, October 19 at McMenamins Edgefield.

Retreat highlights:

\*Pastor Mary Peterson facilitator

\*Content included journaling, small group discussion, large group sharing and reflective personal time

\*3 Thrivent Action Team Grants totaling \$750 covered various expenses- thank you to Terry O'Donel for his guidance

\*42 registered, 36 attended

\*Beautiful grounds, spectacular fall day, delicious catered lunch, amazing gathering of women- thank you to all who attended

\*Planning team- Sarah Brown, Darleen Deasee, Nancy Horton, Donna King, Gail O'Donel, Jan Sickert & Pastor Mary Peterson

**The 41st annual Women's Advent Breakfast, "From Generation to Generation"**, was held Saturday, December 7 with approximately 90 ladies in attendance. Pastor John attended his first Advent Breakfast, providing kind thoughts and blessings. The beautiful Christmas themed tables were thoughtfully decorated and set by table hostesses.



# Women's Ministry

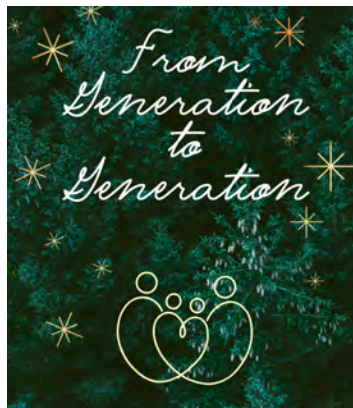
## Breakfast highlights:

- \*Pastor Hallie Parkins, Campus Minister-Luther House, Oregon State University shared a special Advent message
- \*Annually, Advent Breakfast attendees voluntarily contribute to an outreach mission fund. Pastor Hallie's recommended mission outreach: Luther House-Oregon State University, and Good Soil Campus Ministry-University of Oregon. Both missions received a donation of \$1,000 (see financial pages for narrative), courtesy of many giving hearts
- \*Special music by Jan & Rhonda Eppelsheimer, singing of Christmas hymns accompanied by Sandi Nolte
- \*Delicious catered breakfast by Cheryl's on 12th

Thank you to all who volunteered their time and talents to make the Women's Advent Breakfast a success! The morning was a meaningful way to begin the Christmas advent season, visit and celebrate cherished friendships! -Laurie Cook and Annie Miles, Co-chairs

Respectfully Submitted by

*Donna C King*



# Men's Ministry

---

The Men's ministry group continues to be very active at WLLC, with a variety of activities.

We have concluded our Monday Night Football series, and this year we did a study on Martin Luther. This has traditionally been a great way to achieve fellowship, and also do Bible study, as well as other fun activities.

We plan to again provide a great meal for Shrove Tuesday, which is March 4, this year.

We follow with providing an Easter Sunday Brunch. We have traditionally provided a meal between services.  
Easter is April 20, in 2025.

Men's group has continued to build and provide MRE's (Meals Reviving Energy- food packs) to give to people who are hungry.

A new activity this year involves plans to do a work- service project in June. This will take place at Camp Lutherwood, Oregon. We plan to pair with Zion Lutheran Church Men's Group in Oregon City.

Again, an exciting year awaits us.

*Jon Winjum*  
Men's group leader





# HOPE Pantry

---

Thank you West Linn Lutheran members and friends for your generous support of the HOPE food pantry with prayers, time and talents. During 2023 the FBC HOPE averaged 61 households on a Friday afternoon. In 2024 we averaged 68 household visits on Fridays, a 12% increase. During November and December of 2024, as the weather changed, the average number of households visiting HOPE increased to 95. At the end of Friday afternoons, our produce and bakery tables, the canned food shelves, and our 6 refrigerators and 7 freezers were frequently EMPTY.

While this happened, the variety and amount of donated food from the Oregon Food Bank greatly decreased. From the OFB we spent an average of \$0.12 per pound for 170,000 pounds of food. We also purchased missing items from Costco, the Grocery Outlet, Fred Meyers and Trader Joe's. During November and December we purchased 60 turkeys, AND 300 gift cards. And THANKS to the 1st Baptist Church members and friends that made and gave out over 300 Christmas stockings to these families that came to HOPE for food.

During 2024 we served 3,488 food insecure households of which 242 had never been to an OFB supported food pantry before. Their only qualification to receive food is based on the monthly income for their household size. For example, a single person household can earn up to \$3800 a month to qualify for receiving food. Do you know of some one that might qualify and be food insecure? If so, encourage them to visit HOPE. All are welcome here! We want to Help Other People Eat!

HOPE will have hard decisions to make in 2025. i.e., What items do we need to purchase? How do we raise that money? How can we speed up the shopping process? How many times a month should we be open? How do we handle the extra traffic? Etc.

Besides your prayers and donations, HOPE needs volunteers! Can you spare 2 hours a month to help serve your hungry neighbors? There are a variety of ways you can help. For more information, contact Bob Raes at 503-459-9350. I'm looking forward to receiving many calls!

Again THANK YOU for your support of the food insecure families that visit HOPE.  
Your donations of time and talents have greatly helped! Follow God's light!

*Bob Raes*



# 60 + 1 Anniversary Celebration —

WLLC 60+1 ANNIVERSARY CELEBRATION - WLLC 1963-2024 and beyond!

I think I can speak for the entire 60+1 Anniversary planning committee. We had a great time plotting and planning our “Coming Home” event on October 6. We made contact with people from all decades of WLLC. We found pictures and information we’d never seen before. We remembered so many people, events, moments... and most of all love. Thanks to all who stepped in at all levels to make October 6 th a joyous day. We know that many people were unable to attend the actual event. There are still ways to join, including viewing the service on our YouTube channel and viewing the slideshow.

INGATHERING - During our celebration, and through the month of October, we collected an offering for the future. This ingathering will help Camp Lutherwood Oregon as they continue to grow and expand.

With your generosity, we collected over \$1,350.

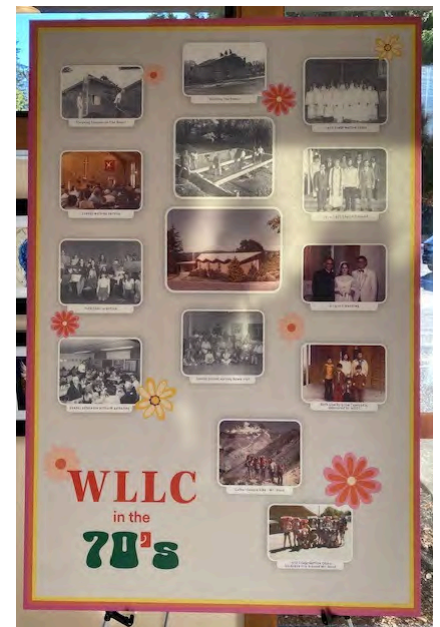
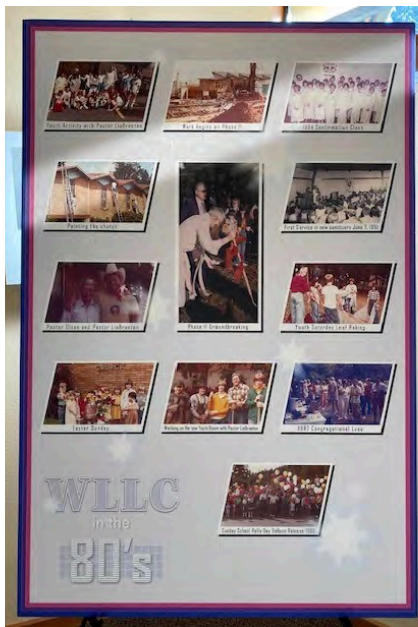
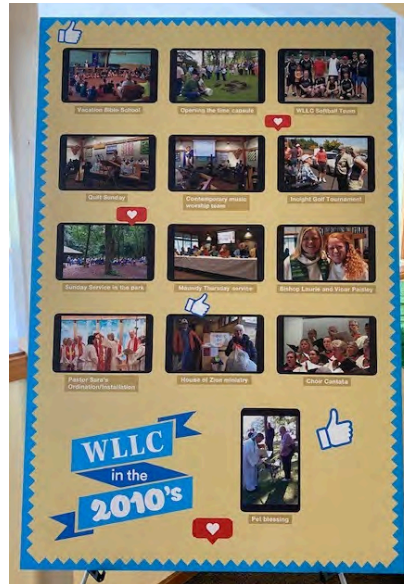
We look forward to our NEXT anniversary celebration, and all the years in between.

*Submitted by Gretchen Dumestre along with the Anniversary Planning Committee: Pastor John Barton, Terry Bottemiller, Suzie Budeau, Gary Eppelsheimer, Sue Harvey, Brenda Hummelt, Jack Mandeville, Anita Olson, Julie Schwabauer, Myrth Williamson*





# WLLC Through the Decades





It has been my pleasure to Chair our Reconciling In Christ Team this past year. We began the year hosting RIC Sunday highlighting the importance of supporting LGBTQIA+ folks and allies. We have also focused on major projects such as ensuring that WLLC and the Oregon Synod had a strong presence at Portland Pride 2024. We had a small but mighty contingent present! In addition to this, we support advocacy and awareness regarding Indigenous People's Month, Black History Month. We were also instrumental in hosting a series of conversations based on the book *Caste*. This led to an even deeper discussion about how WLLC might take a deeper dive. We did this by hosting Dinner Church, which had a dialogue component around the book *The Place We Make*. It was a rich conversation that will lead us forward to more work in the future.

In addition to this, we supported *Sube Y Baja* Play. The play *Sube y Baja* was attended by members of the public and the congregation. It was a thought provoking exploration of the lives of 4 people who live on both sides of the US/Mexico border and how each experiences the problems of living there. In June we did advocacy work for Juneteenth and its importance to our black community. In 2025 we hope to continue many of these projects and to add even more!

*Jack Mandeville*



# WLLC Quilters

The quilters and blanket makers are still working on our different projects for our church community and other charities (Legacy Emanuel Hospital, Randall Children's Hospital, and other nonprofits). We hope this ministry brings peace and comfort to each and every recipient. We made close to 100 quilts and blankets this last year in addition to at least 10 fidget quilts, which are used in memory care. If a member of WLLC has a loved one who needs a quilt or fleece blanket, please contact us and you can choose one for them.

A new to place we are donating fleece blankets and quilts is Project Lemonade. They have a store for foster children where they can shop for clothes, books, and other items for free.

We appreciate the donations the members (and Thrivent) have given us this year. It has allowed our group to buy the materials we need to continue this ministry.

*Janet Enger*





# Creative Spirits

---

Creative Spirits Gallery continues to be a vital and successful part of West Linn Lutheran Church. Our committee includes Heidi Carr, Kathy Kriesel, Mitzi Kugler, Nancy Hawkins, Taryn Kuenzi, Patty Mamula, Pastor John Barton, and Jordan Barton. We meet on the third Tuesday of each month.

Pastor John has become a vital part of our planning and implementing projects that include our congregation. Painting of the doors continues to surprise all of us as the project continues to progress. We look forward to the final result. In November we displayed leaves with words about Being Thankful. In December, we planned our Bring Your Own Art Show (B.Y.O.A.S.) for January 19th. The congregation was invited to bring something they made, bought, or had been given to share in the Fellowship Hall...A One Day Event!

We are continuing to pursue ways to connect Creative Spirits with our community. Posters are made for each cycle of artists and distributed throughout West Linn and Lake Oswego. Our "Walk Around" with current artists has been very successful... This is when we invite an artist to share thoughts, inspiration, materials, secrets about their process, struggles, and answer questions the group may want to ask. We invite artists, congregation members, friends, family, and anyone who may be interested in interviewing one of the artists showing in our gallery. In May, we did our first YouTube interview with Ren Eisenbert and Sarah Bauwsma. This has been very successful and we are grateful that Pastor John volunteered to help us with this. Creative Spirits invited the preschool located downstairs to share their artwork with us earlier this year... it was a huge success :)

We are very grateful to Steve Carr for updating our part of WLLC website. Artists are highlighted here and past artists are acknowledged. The gallery submissions policy as well as the operating policy have been clarified.

Jordan Barton has created a contact list of past and present artists sharing at our Gallery. We will use this to provide information about events at our gallery.

Our Little Art House continues to be visited... located just outside our front doors, we continue to advertise it in our newsletter and with announcements at church services. We encourage participation in stocking it with art as well as taking something to enjoy.

Creative Spirits would like:

1. A permanent sign created and hung in the main hall.
2. To expand our wire hanging system.
3. To have a publicist take responsibility for advertising.
4. To have a paid position oversee all the activities of Creative Spirits.
5. To continue to brainstorm activities that involve our congregation as well as our community.

We appreciate the support we have received from Church Council.

Sincerely,

*Kathy Sandell*

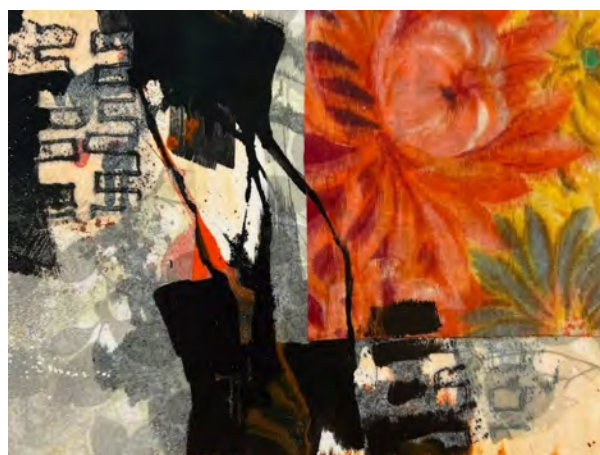


# Creative Spirits

---



**CREATIVE SPIRITS  
ART GALLERY**



# Praise Team & Sunday Servants

This last year the WLLC Praise Team was in full swing. We typically performed every other week where we played the services with contemporary songs. We had the summer off and got back together after Labor Day. The team has managed to stay at about the same number of member as in recent years. We typically have 3 or 4 vocalists plus keyboards, guitar and drums. We could really use more vocalists and musicians, especially a bass player. We practice on Tuesday nights before the Sunday services where we are scheduled. We are a welcoming group and invite anyone with a love of music to come join us. There is no pressure to perform on Sundays until you are ready.

Contact Steve Carr or the church office if you're interested!

*Steve Carr*

In early 2024 it was evident that the system we were using to assign volunteers to serve during worship services was not working. At that time we were using a software program called SignUp Genius which required members to enter their own volunteer time slots. Over time this resulted in a significant reduction in the number of volunteers available for these tasks. The one exception was the Altar Guild. It was not part of SignUp Genius, but was coordinated by Gretchen Dumestre who served as the leader of the group. It was decided to assign "Team Captains" for each Sunday Servant ministry area. They would recruit volunteers and coordinate assignments for weekly service. The Sunday Servant ministry areas and team captains are:

Lector - Chris Lord

Usher - Neal King

Greeter - Brad Horton

A/V - Gary Eppelsheimer

Assisting Minister - Karl Wright

Communion Server - Terry Bottemiller

Altar Guild - Gretchen Dumestre

Coffee House - Lenihann

In addition, the church stopped using SignUp Genius and adopted a simple spreadsheet tool using Google Sheets that the team captains use for scheduling. This spreadsheet is stored on the church server.

The change in approach to scheduling Sunday Servants has been very successful. We now have an expanded pool of volunteers for each ministry area and committed leaders serving as team captains.

*Steve Carr*

# Coin Counters & Kitchen Ministry

We are blessed with our four dedicated and faithful teams who count the money and checks from the offering plates and the offerings coming in the mail. Each team counts weekly for one month, committing to count three months a year. After counting, the Bookkeeper will run the check deposit and the Counters are responsible for getting the cash deposit to the bank. Thank you to our Counting Teams!

We welcome Katrina as our new Bookkeeper and thank Deb as our previous Bookkeeper.

We would like to thank Jan Enger and Suzie Budeau for their many years of counting as they have retired as Coin Counters this year. They continue to serve the church in many, many other ways. Thank you!

*June Lenihan*

Memorial Service Receptions - thanks to an amazing, caring group of women, we are able to support families by setting up, making coffee, setting up the food on the buffet table and cleaning up after the reception. The families provide the food and supplies. We supply and make coffee and help in whatever way we can. It is a real ministry to be able to be a small part of offering help to families at a time of grief. They are so appreciative. We have a checklist to help the family know what they need and how we can be of help.

Coffee House - We purchase coffee, tea, creamers, sugars, juice and paper supplies used by Coffee House and WLLC meetings. Each week someone volunteers to bring donuts and fruit (and whatever else they would like to serve). They set up, make coffee and clean up for Coffee House. We now use 9 round tables for Coffee House, which is wonderful that so many people are socializing together after church.

Keeping Order in Kitchen and Pantry used by several Community Partners. We have labeled the kitchen cabinet with their contents making it easier to find them and put them away.

*June Lenihan and Linda Kolstad*

# Treasurer's Report

---

2024 was an exciting year for West Linn Lutheran Church! We were blessed enough to begin the year fully budgeted for all our programs and staff. We welcomed Pastor John and his family in February and hit the ground running from there. We added Jordan Barton to our office staff so that Jack could move further into his Deacon Training. Katrina Curtis became our new bookkeeper. She and Nancy Horton completed a successful internal audit. We recently hired a new accompanist and are now in search of a Nursery Attendant.

As a congregation we continued to honor our 10% Benevolence commitment to the Oregon ELCA, as well as send the designated funds to our monthly outreaches. We are currently awaiting appropriate bids for the planning of our Capital Campaign. AND... we paid off our mortgage in April! Hallelujah!

Our Courageous Stewardship Challenge last fall helped to fund our budget for 2025. Because of your commitment to pledging, general giving, and special donations, we are set up for another fully budgeted year. Thank you! Our finance team, as usual, continued to be creative and careful in developing this budget. Our sincere thanks goes to our finance team: Nancy Horton, Jim Dumestre, and Terry O'Donel, and to our Church Council for their input and support. Of course, none of this could be accomplished without you, our WLLC congregation! Thank you! Your faithful attendance, participation, and financial support are so appreciated as we grow our church and do the work of our Lord. HERE WE GO!

*Chris Lord, Treasurer*



# **2024 Financial Statements**

- **Balance Sheet – December 31, 2024 - All Funds**
- **Operating Fund – Year ended December 31, 2024 -  
Budget vs. Actual**
- **Various Other Funds – Summary Activity Schedules -  
2024**



**West Linn Lutheran  
Church Balance Sheet  
As of December 31, 2024**

**ASSETS**

B of A Checking (#1100)	\$63,846
B of A Savings (#1155)	\$52,173
B of A Certificate of Deposit (interest-bearing) (#1175)	\$30,185
<b>Total Cash at Bank of America</b>	<b>\$146,204</b>
InFaith Scholarship Endowment Investment - FMV (must be minimum of \$25k to distribute excess) (#1180)	\$27,239
<b>Total Cash &amp; Investments</b>	<b>\$173,443</b>
<b>TOTAL ASSETS</b>	<b>\$173,443</b>

**LIABILITIES AND FUND BALANCES**

Accounts Payable - Operating Fund (#2000)	\$9,096
<b>TOTAL LIABILITIES</b>	<b>\$9,096</b>

**FUND BALANCES - See Supplemental Schedules**

<b>Unallocated ERC Funds (#2040)</b>	<b>\$12,724</b>
<b>Discretionary Funds</b>	
Pastor's Discretionary (#3415.40)	\$1,326
Council Discretionary (#3415.41)	\$12,007
Special Contributions (#3415.42)	\$3,916
<b>Total Discretionary Funds</b>	<b>\$17,249</b>
<b>Memorial Fund (#3300)</b>	<b>\$11,877</b>
<b>Scholarship Fund (#3425)</b>	<b>\$29,239</b>
<b>WLLC Church Ministries Programs - See Program Reports</b>	
Youth Fund (#3420.05)	\$1,010
Youth Gatherings (#3420.10)	\$1,925
Holy Listening (#3420.51)	\$0
Women's Ministries-General (#3420.52)	\$530
Men's Ministries-General (#3420.53)	\$21



**West Linn Lutheran  
Church Balance Sheet  
As of December 31, 2024**

Continued from prior page

Creative Spirits (#3420.55)	\$200
Anniversary Celebration (#3420.57)	\$0
Internship Program (#3420.66)	\$512
Women's Advent Breakfast (#3420.70)	\$1,123
AV Music Ministry Fund (#3420.77)	\$565
Community Service (#3430.66)	\$3,700
WLLC Quilters (#3430.90)	\$3,703
Holidays & Special Events - Flowers/Decorations (#3430.92)	\$1,332
<b>Total WLLC Church Ministries Programs</b>	<b>\$14,621</b>
<b>WLLC Outreach Programs</b>	
Sacele/Romania Funds (#3430.40)	\$3,226
Total WLLC Outreach Programs Pending Release to Charity (all others were paid out at 12/31/24)	\$3,226
<b>Bldg &amp; Equip Maint. Reserves (#3571)</b>	
Opening Balance 1/1/2023 (#3571.0)	\$9,463
Donations & Fund Transfers (#3571.1)	\$57,802
Recurring Maintenance & Repairs Expense (#3571.2)	(\$23,535)
Capital Campaign 2025 Expenses (#3571.5)	(\$33,730)
<b>Total Bldg &amp; Equip Maint. Reserves, Ending Balance</b>	<b>\$10,000</b>
<b>Operating Fund Balances</b>	
2023 and Prior Operating Budget Surplus Retained	\$28,643
2024 Operating Surplus	\$5,505
Add Prior Year Surpluses Allocated to 2025 Budget	\$31,263
Subtotal - 2025 Operating Budget	\$36,768
<b>Total Operating Fund Balances</b>	<b>\$65,411</b>
<b>TOTAL LIABILITIES &amp; FUND BALANCES</b>	<b>\$173,443</b>

**West Linn Lutheran Church**  
**Operating Fund - Actual vs Budget - Year ended December 31, 2024**

	Actual	Budget	Difference	% of Budget
4005 Estimates of Giving	\$335,677	\$368,755	(\$33,078)	-9%
4010 Envelope Giving	52,782	18,000	34,782	193%
4020 Loose Offerings	4,560	3,000	1,560	52%
<b>Total 4001 Congregational Support</b>	<b>393,019</b>	<b>389,755</b>	<b>3,264</b>	<b>1%</b>
4060 Building Use	258	1,200	(942)	-79%
4061 Building Partners	14,924	18,000	(3,076)	-17%
4061.1 Building Partner Expenses	(1,359)	0	(1,359)	0%
4062 Cottage Rental	9,600	9,600	0	0%
4070 Interest Income	216	0	216	0%
4551 Thrivent Choice Dollars	594	792	(198)	-25%
4553 Kroger Awards	6	0	6	0%
<b>Total 4045 Misc Income</b>	<b>24,239</b>	<b>29,592</b>	<b>(5,353)</b>	<b>-18%</b>
<b>TOTAL RESOURCES</b>	<b>\$417,258</b>	<b>\$419,347</b>	<b>(\$2,089)</b>	<b>0%</b>
<b>1-6050 ELCA Mission Support</b>				
6050.05 ELCA-Oregon Synod - Mission Support	40,302	38,976	1,326	3%
<b>Total 2-6402 PASTORS' SALARY &amp; BENEFITS</b>	<b>110,726</b>	<b>115,406</b>	<b>(4,680)</b>	<b>-3%</b>
<b>Total 3-6401 LAY MINISTRY COMP &amp; BENEFITS</b>	<b>169,588</b>	<b>198,718</b>	<b>(29,130)</b>	<b>-7%</b>
<b>4-6400 FAITH FORMATION</b>				
6246 Intergenerational	732	900	(168)	-19%
6420 Middle School	(58)	1,200	(1,258)	-105%
6426 Children/Family	20	1,200	(1,180)	-98%
6440 High School	0	360	(360)	-100%
6450 Adult	780	240	540	225%
6451 RIC-Social Justice	620	500	120	24%
<b>Total 4-6400 FAITH FORMATION</b>	<b>2,094</b>	<b>4,400</b>	<b>(2,306)</b>	<b>-52%</b>
<b>5-6500 WORSHIP</b>				
6580 Guest Pastor 6590	227	1,350	(1,123)	-83%
Worship & Altar Supplies 6625	2,403	2,250	153	7%
Guest Musician 6630 Sr. Choir	400	600	(200)	-33%
Music 6640 Worship Mat'l & Communications Licensing	649	480	169	35%
	1,022	1,800	(778)	-43%
<b>Total 5-6500 PROCLAMATION</b>	<b>4,701</b>	<b>6,480</b>	<b>(1,779)</b>	<b>-27%</b>
<b>6-6200 COMMUNITY GROUPS</b>				
6275 Hospitality Expenses (incl CoffeeHouse)	2,296	1,200	1,096	91%
6277 Hospitality Donations (incl CoffeeHouse donations)	(2,718)	(600)	(2,118)	353%
<b>Total 6-6200 COMMUNITY GROUPS</b>	<b>(422)</b>	<b>600</b>	<b>(1,022)</b>	<b>-170%</b>

**West Linn Lutheran Church**  
**Operating Fund - Actual vs Budget - Year ended December 31, 2024**

	Actual	Budget	Difference	% of Budget
Continued from previous page				
<b>7-6300 BUILDING &amp; PROPERTY</b>				
6310 Custodial Supplies	628	1,000	(372)	-37%
6315 Janitorial Services	7,163	8,000	(837)	-10%
6320 Bldg & Equip to Reserve	4,800	4,800	0	0%
6321 Small Repair & Maintenance	1,806	1,200	606	51%
6322 Security & Maintenance Contracts	1,719	720	999	139%
6330 Mortgage Payment	5,808	5,546	262	5%
6340 Property Insurance	8,879	9,000	(121)	-1%
6345 Landscaping	0	1,200	(1,200)	-100%
6350 Utilities				
6350.10 Electric	6,379	6,000	379	6%
6350.20 Gas	4,982	4,545	437	10%
6350.30 Water, Sewer	5,357	3,900	1,457	37%
6350.40 Garbage	3,046	2,700	346	13%
6350.50 Telephone	5,804	3,610	2,194	61%
<b>Total 6350 Utilities</b>	<b>25,568</b>	<b>20,755</b>	<b>4,813</b>	<b>23%</b>
<b>Total 7-6300 BUILDING &amp; PROPERTY</b>	<b>56,371</b>	<b>52,221</b>	<b>4,150</b>	<b>68%</b>
<b>8-6800</b>				
<b>ADMINISTRATION</b>				
6240 Library	285	420	(135)	-32%
6570 Synod Meetings & Bishops Convocations	1,202	1,000	202	20%
6571 Pastoral Call Expenses	8,458	9,500	(1,042)	-11%
6700 Stewardship	502	480	22	5%
6870 Office Supplies	3,039	2,400	639	27%
6874 Communication Subscriptions	844	1,051	(207)	-20%
6875 Financial Software Subscriptions	2,174	1,737	437	25%
6876 Lay Team Recruiting Expenses	1,827	0	1,827	0%
6880 Postage	777	1,500	(723)	-48%
6890 Office Equip Lease & Maint	4,229	3,840	389	10%
6891 Office Computer Equip & Maintenance	845	1,600	(755)	-47%
6895 Payroll Fees	1,597	1,888	(291)	0%
6930 Misc Expense	427	171	256	150%
6940 Bank Charges	2,187	2,717	(530)	-20%
<b>Total 8-6800 ADMINISTRATION</b>	<b>28,393</b>	<b>28,304</b>	<b>89</b>	<b>59%</b>
<b>TOTAL EXPENSES</b>	<b>\$411,753</b>	<b>\$445,105</b>	<b>(\$33,352)</b>	<b>-7%</b>
<b>2024 OPERATING RESULTS BEFORE PRIOR SURPLUSES</b>	<b>\$5,505</b>	<b>(\$25,758)</b>	<b>\$31,263</b>	
<b>2023 SURPLUS ALLOCATED TO 2024 BUDGET</b>	<b>\$25,758</b>	<b>\$25,758</b>		
<b>CUMULATIVE OPERATING BUDGET SURPLUS CARRYING INTO 2025</b>	<b>\$31,263</b>	<b>\$0</b>		

## Various Funds Other than Operating Fund - 2024 Activity Summaries

MEMORIAL FUND - 2024 SUMMARY	
Fund Balance 12/31/23	\$12,723
Gifts in Memory of Loved Ones	\$141
Expenditures for Memorials	(\$62)
Council Authorized Transfer to 60th Anniversar	(\$925)
<b>Fund Balance 12/31/24</b>	<b>\$11,877</b>

Pastor's Discretionary Fund - 2024 Summary	
Fund Balance 12/31/23	\$919
Donati ons	\$726
Expenses	(\$293)
<b>Fund Balance 12/31/24</b>	<b>\$1,352</b>

Council's Discretionary Fund - 2024 Summary	
Fund Balance 12/31/23	\$1,677
Transfer from Closed WLLC Ministry Funds	\$250
Anonymous Donor - Unrestricted	\$10,000
Other Donations Throughout Year	\$675
Expenditures:	
Pastor Installation	(\$211)
Council Annual Retreat & Leadership Me	(\$988)
New Church Logo Design	(\$500)
Congregational & Other Activities	(\$896)
<b>Fund Balance 12/31/24</b>	<b>\$10,007</b>

Special Contributions - 2024 Summary					
Description	2024 Carpet Cleaning	2023 Trees Project	2023 Parking Lot Projects	Other	Total
Fund Balance 12/31/23	\$0	\$1,990	\$416	\$0	\$2,406
Donati ons	\$2,144	\$0	\$0	\$905	\$3,049
Expenditures to Projects	(\$1,540)	\$0	\$0	\$0	(\$1,540)
<b>Fund Balance 12/31/24</b>	<b>\$604</b>	<b>\$1,990</b>	<b>\$416</b>	<b>\$905</b>	<b>\$3,915</b>

Scholarship Fund - 2024 Summary - Market Value	
Fund Balance 12/31/23	\$24,967
Investments - Market Appreciation	\$2,272
Fund Transfer Authorized by Council	\$2,000
Donati ons	\$0
Expenses	\$0
<b>Fund Balance 12/31/24</b>	<b>\$29,239</b>

## Various Funds Other than Operating Fund - 2024 Activity Summaries

WLLC Ministries - 2024 Summary									
WLLC Program	Category #	12/31/23 Balances	2024 Activity					2024 Net	12/31/24 Balances
			Donations / Fundraising	Thrivent Action Team Grants	Fund Transfers Authorized by Council	Program Spending	Grants to Charities		
Anniversary Celebration	#3420.57	\$0	\$2,500	\$250	\$1,425	(\$4,175)		\$0	\$0
AV Music Ministry	#3420.77	\$565						\$0	\$565
Community Service	#3430.66	\$4,013			(\$313)			(\$313)	\$3,700
Creative Spirits	#3420.55	\$110	\$90					\$90	\$200
Holidays & Special Events- Flowers/Decorations	#3430.92	\$4,628	\$903		(\$2,000)	(\$199)		(\$1,296)	\$3,332
Holy Listening	#3420.51	\$0	\$475			(\$475)		\$0	\$0
Internship Program	#3420.66	\$2,512			(\$2,000)			(\$2,000)	\$512
Men's Ministries- General	#3420.53	(\$34)	\$55					\$55	\$21
WLLC Quilters	#3430.90	\$2,889	\$2,586		(\$500)	(\$1,249)		\$837	\$3,726
Women's Advent Breakfast	#3420.70	\$1,379	\$4,464			(\$2,720)	(\$2,000)	(\$256)	\$1,123
Women's Ministries- General	#3420.52	\$1,380	\$1,742	\$750		(\$3,342)		(\$850)	\$530
Youth Fund	#3420.05	\$1,101	\$100			(\$191)		(\$91)	\$1,010
Youth Gatherings/ Mission Trips	#3420.10	\$1,925						\$0	\$1,925
<b>Totals</b>		<b>\$20,468</b>	<b>\$12,915</b>	<b>\$1,000</b>	<b>(\$3,388)</b>	<b>(\$12,351)</b>	<b>(\$2,000)</b>	<b>(\$3,824)</b>	<b>\$16,644</b>



## Various Funds Other than Operating Fund - 2024 Activity Summaries

OUTREACH PROGRAMS - 2024 SUMMARY				
Charity	12/31/23 Balance Held for Charity	2024 Activity		12/31/24 Balance Held for Charity
		Donations	Paid to Charity	
Camp Lutherwood	\$310	\$1,151	(\$1,461)	\$0
CASA	\$0	\$2,260	(\$2,260)	\$0
ELCA Program- Disaster Relief	\$0	\$30	(\$30)	\$0
ELCA Program- Microloans	\$0	\$1,956	(\$1,956)	\$0
ELCA Program- World Hunger	\$0	\$1,856	(\$1,856)	\$0
ELCA Program- Good Gifts	\$0	\$350	(\$350)	\$0
Going Home II	\$0	\$1,373	(\$1,373)	\$0
HOPE Local Hunger	\$0	\$4,199	(\$4,199)	\$0
Incight	\$0	\$1,641	(\$1,641)	\$0
Libyan Family Scholarship	\$0	\$575	(\$575)	\$0
Quilts for Empowerment	\$0	\$745	(\$745)	\$0
Reconciling Works	\$0	\$531	(\$531)	\$0
Sacele / Romania	\$450	\$7,276	(\$4,500)	\$3,226
St. Joseph's Shelter & Mission	\$0	\$253	(\$253)	\$0
The Father's Heart	\$0	\$2,642	(\$2,642)	\$0
<b>Totals</b>	<b>\$760</b>	<b>\$26,838</b>	<b>(\$24,372)</b>	<b>\$3,226</b>

BUILDING & EQUIPMENT RESERVES - 2023 & 2024 SUMMARY			
	Large Repairs & Maintenance	Future Capital Campaign	Total
<b>Fund Balance 12/31/22</b>	\$9,463		\$9,463
<b>Additions - 2023 &amp; 2024</b>			
Donations	\$2,240	\$10,000	\$12,240
Transfers from the Operating Budget	\$9,600	\$0	\$9,600
Transfer from ERC Reserves per Council	\$2,233	\$33,730	\$35,963
<b>Spending - 2023 &amp; 2024</b>			
<b>Recurring:</b>			
Electric Issues	(\$1,006)		(\$1,006)
Entrance Doors	(\$7,200)		(\$7,200)
HVAC Maintenance	(\$4,603)		(\$4,603)
Kitchen Dishwasher/Sanitizer	(\$2,301)		(\$2,301)
Plumbing Issues	(\$4,527)		(\$4,527)
Sanctuary AV Station / Equipment	(\$650)		(\$650)
Security Systems	(\$2,470)		(\$2,470)
Other	(\$779)		(\$779)
<b>Future Capital Campaign:</b>			
Inspection / Analysis - by Forensic Building Consultants - Cumulative Invoices		(\$33,730)	(\$33,730)
<b>Fund Balance 12/31/24</b>	<b>\$0</b>	<b>\$10,000</b>	<b>\$10,000</b>

# **2025 Proposed Operating Budget**

- **Courageous Stewardship Response to Date for Operating Budget**
- **Proposed 2025 Operating Budget**

**2025 COURAGEOUS STEWARDSHIP RESPONSE**

<b><u>Estimates of Giving (EOG) Results &amp; Forecast</u></b>	<b><u># Households</u></b>	<b><u>2025 Forecast</u></b>
2024 Stewardship Responses		
Increased compared to last year	20	\$103,395
The same compared to last year	27	\$126,480
Decreased compared to last year	10	\$32,450
New 2024 pledgers - new givers, conversions from Envelope giving last year	9	\$11,040
EOG Response Subtotal	66	\$273,365
Other EOG Forecast, including 2024 active EOGs not yet responding and new pledges during 2025	16	\$52,635
<b>Subtotal - EOG</b>	<b>82</b>	<b>\$326,000</b>
<b><u>Envelope "Will Give As Able" Forecast</u></b>		
2024 Historical (excludes 2024 givers who converted to EOG above)	35	\$32,000
Forecasted New Giving		\$23,000
<b>Subtotal - Envelope</b>	<b>35</b>	<b>\$55,000</b>
<b><u>Loose Offerings - Estimate</u></b>		<b>\$5,000</b>
<b>2025 Congregational Giving Forecast</b>	<b>117</b>	<b>\$386,000</b>

**West Linn Lutheran Church**  
**2025 PROPOSED OPERATING BUDGET**

Category		2024 Actual	2025 Budget	2025 Budget vs 2024 Actual	
	4005 - Estimates of Giving (Pledges)	\$335,677	\$326,000	(\$9,677)	-3%
	4010 - Envelope Giving	52,782	55,000	2,218	4%
	4020 - Loose Offerings	4,560	5,000	440	10%
<b>A. TOTAL CONGREGATIONAL SUPPORT</b>		<b>\$393,019</b>	<b>\$386,000</b>	<b>(\$7,019)</b>	<b>-2%</b>
	4060 - Building Ad Hoc Income	\$258	\$1,000	\$742	288%
	4061 - Building Partners Recurring Income	13,565	15,000	\$1,435	11%
	4062 - Cottage Rental	9,600	9,600	\$0	0%
	4070 - Interest Income	216	1,800	\$1,584	733%
	4551 - Thrivent Choice Dollars	594	500	(\$94)	-16%
	4553 - Kroger Rewards	6	0	(\$6)	-100%
<b>B. TOTAL OTHER RESOURCES</b>		<b>\$24,239</b>	<b>\$27,900</b>	<b>\$3,661</b>	<b>15%</b>
<b>C. TOTAL RESOURCES (A+B)</b>		<b>\$417,258</b>	<b>\$413,900</b>	<b>(\$3,358)</b>	<b>-1%</b>
<b>D. EXPENSES</b>					
<b>6050 - MISSION SUPPORT</b>					
Total 6050 - MISSION SUPPORT TO ELCA OREGON SYNOD - 10% of Congregational Giving, Paid Monthly		\$40,302	\$38,600	(\$1,702)	-4%
<b>Total 6402 - PASTORS' SALARY &amp; BENEFITS</b>		<b>110,726</b>	<b>\$117,028</b>	<b>\$6,302</b>	<b>6%</b>
<b>Total 6401 - LAY MINISTRY COMP &amp; BENEFITS</b>		<b>169,586</b>	<b>\$202,964</b>	<b>\$33,378</b>	<b>20%</b>
<b>6400 - FAITH FORMATION</b>					
	6246 - Intergenerational Faith Formation	732	\$800	\$68	9%
	6420 - Middle School Faith Formation	(58)	900	958	-1652%
	6426 - Children/Family Faith Formation	20	900	880	4400%
	6440 - High School Faith Formation	0	400	400	0%
	6450 - Adult Faith Formation	780	1,000	220	28%
	6451 - Social Justice	620	400	(220)	-35%
<b>Total 6400 - FAITH FORMATION</b>		<b>2,094</b>	<b>\$4,400</b>	<b>\$2,306</b>	<b>110%</b>

*Continued on next page*

**West Linn Lutheran Church  
2025 PROPOSED OPERATING BUDGET**

Category		2024 Actual	2025 Budget	2025 Budget vs 2024 Actual	
				<i>Continued from previous page</i>	
<b>6500 · WORSHIP SERVICES</b>					
6580 · Guest Pastor		227	\$400	\$173	76%
6590 · Worship & Altar Supplies		2,403	2,500	97	4%
6625 · Guest Musician		400	500	100	25%
6630 · Sr Choir Music		649	700	51	8%
6640 · Worship Team/Licensing		1,022	1,200	178	17%
<b>Total 6500 · WORSHIP SERVICES</b>		<b>4,701</b>	<b>\$5,300</b>	<b>\$599</b>	<b>13%</b>
<b>6200 · HOSPITALITY</b>					
6275 · Kitchen and Other Hospitality Ministries		2,296	\$3,000	\$704	31%
6277 · Coffeehouse and Other Hospitality Donations to Defray Expenses		(2,718)	(3,000)	(282)	10%
<b>Total 6200 · HOSPITALITY</b>		<b>(422)</b>	<b>\$0</b>	<b>\$422</b>	<b>-100%</b>
<b>6300 · BUILDING &amp; PROPERTY</b>					
6310 · Custodial Supplies		628	\$700	\$72	11%
6315 · Janitorial Services		7,163	7,800	637	9%
6320 · Bldg & Equip Reserve Contributions from Operating Budget		4,800	6,000	1,200	25%
6321 · Small Repair & Maintenance		1,806	2,000	194	11%
6322 · Security & Maintenance Contracts		1,719	2,000	281	16%
6345 · Landscaping Supplies		0	1,000	1,000	0%
<b>Total 6330 · Mortgage Payment</b>		<b>5,808</b>	<b>0</b>	<b>(5,808)</b>	<b>-100%</b>
6340 · Property Insurance		8,879	9,500	621	7%
6350.10 · Electric		6,379	7,000	621	10%
6350.20 · Gas		4,982	5,500	518	10%
6350.30 · Water, Sewer		5,357	6,000	643	12%
6350.40 · Garbage		3,046	3,400	354	12%
6350.50 · Telephone		5,804	6,000	196	3%
<b>Total 6300 · BUILDING &amp; PROPERTY</b>		<b>56,371</b>	<b>\$56,900</b>	<b>\$529</b>	<b>1%</b>

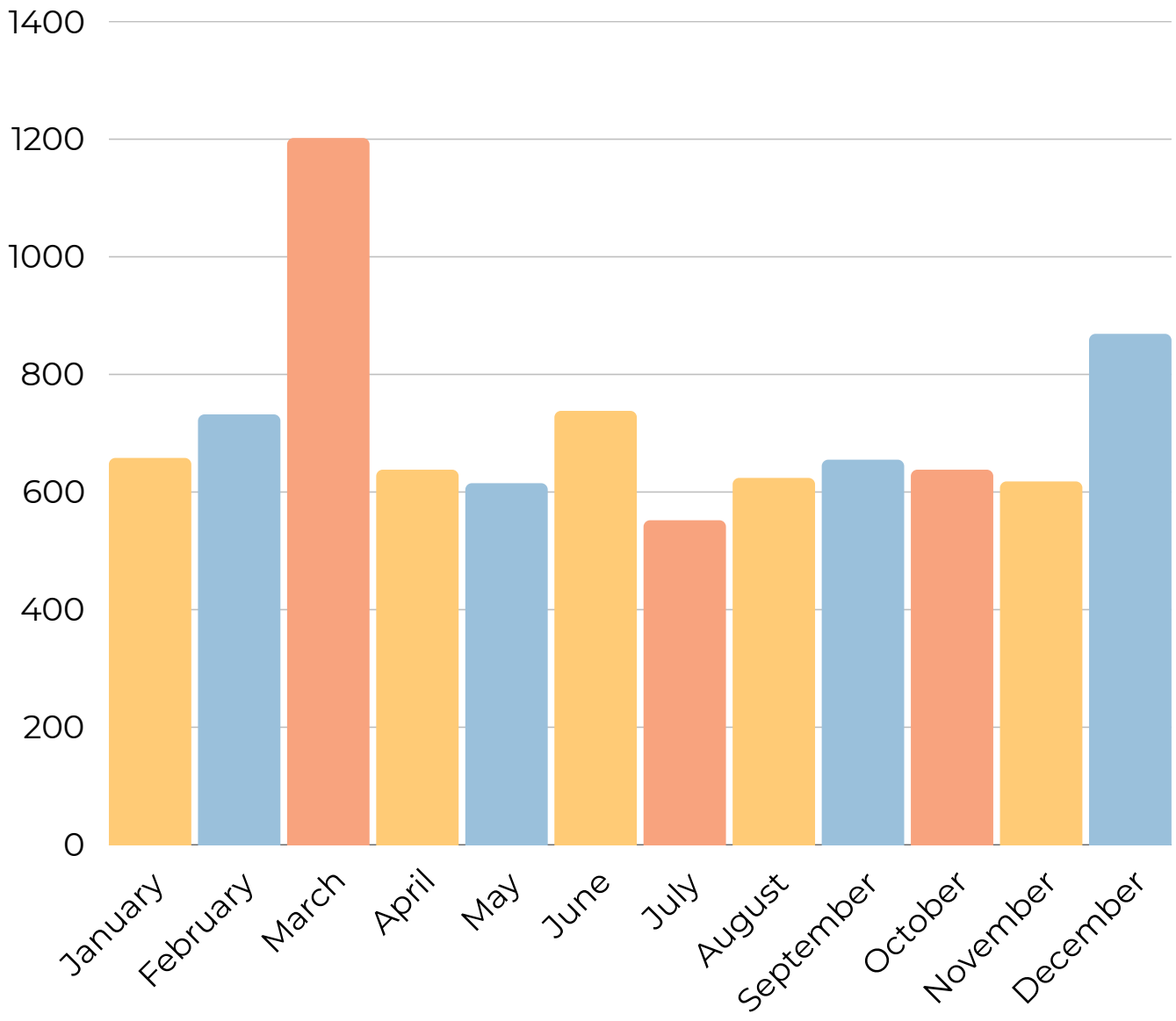
*Continued on next page*



**West Linn Lutheran Church**  
**2025 PROPOSED OPERATING BUDGET**

Category	2024 Actual	2025 Budget	2025 Budget vs 2024 Actual	
			<i>Continued from previous page</i>	
<b>6800 · ADMINISTRATION</b>				
6570 · Synod Assembly + Bishop's Convocation	1,202	\$2,500	\$1,298	108%
6240 - Library	285	400	115	40%
6571 - Pastoral Call Expenses	8,458	0	(8,458)	-100%
6700 · Stewardship	502	515	13	3%
6870 · Office Supplies	3,039	3,132	93	3%
6880 · Postage	777	800	23	3%
6890 · Office Equip Lease & Maint	4,229	4,360	131	3%
6890.11 · Communications Subscriptions	844	870	26	3%
6876 - Lay Team Recruiting Expenses	1,827	800	(1,027)	-56%
6891 · Office Computer Equipment & Maint	845	870	25	3%
6892 - Accounting & Donation Software Subscriptions	2,174	2,239	65	3%
6895 - Payroll Fees	1,597	1,245	(352)	-22%
6930 · Misc Expense	427	440	13	3%
6940 · Bank Charges	2,189	1,800	(389)	-18%
<b>Total 6800 · ADMINISTRATION</b>	<b>28,395</b>	<b>\$19,972</b>	<b>(\$8,423)</b>	<b>-30%</b>
<b>D. TOTAL OPERATING EXPENSES</b>	<b>\$411,753</b>	<b>\$445,163</b>	<b>\$33,410</b>	<b>8%</b>
<b>E. TOTALS - BEFORE SURPLUS CARRYOVERS (C-D)</b>	<b>\$5,505</b>	<b>(\$31,263)</b>	<b>(\$36,768)</b>	
<b>F. SURPLUS CARRYOVERS - 2023 AND PROPOSED 2024 ALLOCATION</b>				
2023 Surplus Allocated to 2024 Budget	\$25,758			
Cumulative Surpluses Allocated to 2025 Budget (oldest year first)		\$31,263		
<b>G. NET OPERATING SURPLUS FOR THE YEAR (E+F)</b>	<b>\$31,263</b>	<b>(\$0)</b>		

# Average Monthly WLLC Attendees



**Average Sunday Attendance:** 168 attendees per Sunday (both in-person and online included)

**2024 Total Number of Attendees:** 8,699

**Most Highly Attended Month of 2024:** March (with a whopping 1,202 attendees!)

# Pastoral Acts 2024

---

## 6 Members Passed in 2024

Ronald Jacobson, 03/09/24

Ronald Koppang, 07/05/24

Evalois King, 09/02/24

Doris Clark, 10/05/24

James Aten, 11/08/24

Neil Robins, 12/11/24

In loving remembrance, we honor and celebrate the faithful lives of these beloved siblings in Christ.

## 2024 Membership

Membership Prior to 2024 Membership Review:

**779**

Revised Active Membership:

**333**

In 2024, a comprehensive review of membership was completed. It had been at least 15 years since this was conducted. As a result, some of the 779 names on the roll have been reviewed and hence removed due to death or transfer. 333 better represents the number of people that count WLLC as their home congregation.

# 2024 Annual Meeting Minutes

**Opening Prayer:** Pastor John Barton

**Establish Quorum:** Jeff Young, Council President

**Call to Order:** Jeff Young

**Approval of Minutes:** Jeff Young

-2023 Congregational Annual Meeting

-Special Congregational Meeting to Call Pastor Barton

**Council President's Remarks:** Jeff Young

**Pastor's Report/Remarks:** Pastor John Barton

**Reports from Staff, Officers, and Teams**

**Business:** Chris Lord, Treasurer and Nancy Horton, Finance Chair

2023 Financial Statements- Final

2024 Operating Budget- Recommendation

**Elections:** Jeff Young

-Council Position Elections

-Synod Assembly Voting Members

-Camp Lutherwood Representative

**Announcements:** Jeff Young

**Adjourn:** Jeff Young





# WLLC Mission Statement

We Invite All People into a Trusting Relationship with  
God through Jesus Christ.

## Welcoming Statement

West Linn Lutheran Church is a community of faith that welcomes all regardless of race, religion, color, sex, gender identity, sexual orientation, family status, national origin, age, disability, medical history, political affiliation, financial situation, mistakes made, successes achieved or any other category that you or the world have determined you belong. Our hope is that our congregation loves all as Jesus loves the world.

No exceptions.

This welcome extends throughout the life of our congregation.

